

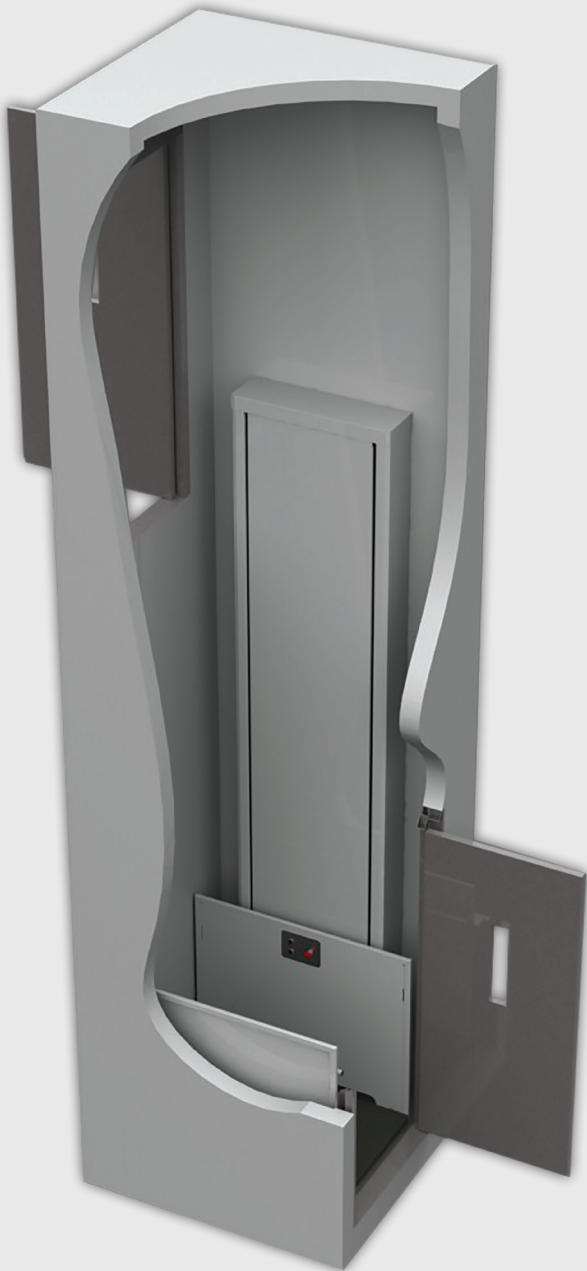


**ACCESS**  
LIFTS | RAMPS | ELEVATORS

**symmetry**  
ELEVATING SOLUTIONS

# Shaftway Vertical Platform Lift

VPL-SL for Residential & Commercial Applications



Available with:

- Low profile carriage
- Accelerated Acme Screw Drive
- Full-speed battery back up

AccessLiftsandRamps.com  
800-515-5438



# Convenient access to all levels.

Whether for commercial or residential, outdoor or indoor use, Symmetry Vertical Platform Lifts help eliminate the barrier that stairs may present for people with limited mobility. Vertical Platform Lifts provide convenient access without compromising architectural character. Designed and manufactured to meet the applicable requirements in ASME A18.1, ICC A117.1, and NFPA 70.

## Standard Features

- Rated Capacity: 750 lbs.
- Speed: 10-20 fpm (see drive options for details)
- Lifting Height: Up to 168"
- Steel construction with powder-coated finish
- A.W.A.R.E. system (Active Wiring, Accessories, Relay and Electronics Diagnosis)\*
- Constant-pressure up/down control switch installed on the platform
- Constant-pressure control station provided at each landing
- Four-year limited parts warranty

## Safety Features

- Grab rail
- Non-skid platform surface (Black)
- Alarm and emergency stop switch
- Landing interlocks keep doors closed/locked when the platform is at another landing
- Upper final limit switch (optional on Hydraulic Drive)
- Safety lift nut for Acme Screw Drive
- Broken chain safeties for Hydraulic Drive

## Optional Features

- Low Profile Carriage: 1½" pit depth
- 230 VAC power supply
- ADA phone for both indoor and outdoor models
- Emergency platform lighting
- Key switches to lock platform and landing controls
- Stationary ramp
- Full-speed battery back up
- Power gate/door operators
- Manual lowering wrench (standard for non-hydraulic commercial lifts)
- 5 ftc LED lights with or without battery back up

## Clear Platform Sizes

(Custom sizes and designs available)

- 36"W x 48"D
- 36"W x 54"D
- 36"W x 60"D
- 42"W x 60"D

## Enter/Exit Configurations

- Straight-Through
- 90°
- Enter/Exit Same Side
- 3 Openings

## Gate/Door Options

- 80" tall landing gate\*\*
- 42" upper/tall landing gate\*\*
- Non-Fire-rated Red Oak door†
- 1½ hour Fire-rated steel door (B Label)

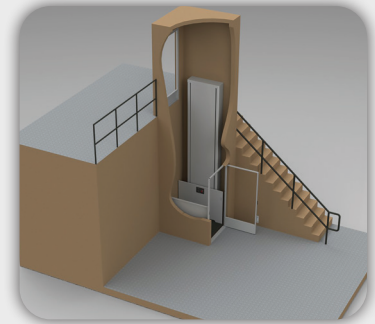
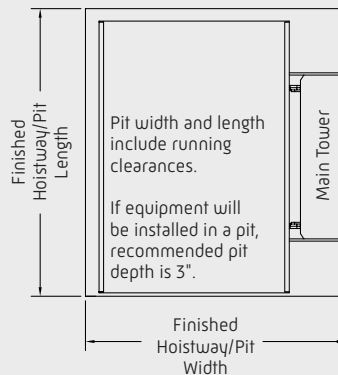
*This brochure is intended for INFORMATIONAL PURPOSES ONLY and SHOULD NOT be used for construction.*

## Drive Options

- Acme Screw Drive: 10 fpm, 1.5 HP, 115 VAC
- Accelerated Acme Screw Drive: 20 fpm, 1.5 HP, 115 VAC
- Chain Hydraulic Drive: 17-20 fpm, 3 HP, 115 VAC

Straight-Through Configuration					
Clear Platform Width	Clear Platform Length	Finished Hoistway Width	Finished Hoistway Length	Upper Gate Center Line	
36"	48"	53"	49½"	31½"	
36"	54"	53"	55½"	31½"	
36"	60"	53"	61½"	31½"	
42"	60"	59"	61½"	34½"	
Enter/Exit Same Side Configuration					
Clear Platform Width	Clear Platform Length	Finished Hoistway Width	Finished Hoistway Length	Platform Center Line	
36"	48"	53"	52½"	31½"	
36"	54"	53"	58½"	31½"	
36"	60"	53"	64½"	31½"	
42"	60"	59"	64½"	34½"	
90° Adjacent (tower left or right)					
Clear Platform Width	Clear Platform Length	Finished Hoistway Width	Finished Hoistway Length	Upper Gate Center Line	Lower Gate Center Line
42"	60"	56¼"	64½"	Varies	33⅛"

## Footprint Layout



Straight-Through Shaftway Application Shown

## Color Options

Full selection of RAL colors available.



\* Symmetry Elevating Solutions exclusive

\*\* Available with optional acrylic insert or laminated safety glass

† Also available in other wood choices by request

